

PRO-SIS SA Tidbits

BY RICHARD ROOKS

By now many of you are using PRO-SIS SA on a daily basis and have become quite comfortable using it. However, there might be a useful button that you could have overlooked that I would like to specifically point out to you.

The main search screen for Automobile and Heavy Duty engines contain a button at the top right of the window (figure 1) that looks like a printer. Well guess what? It sends data to the printer! As an example on how to use it, if you need to print a bulletin all you have to do is select the bulletin (figure 2) and then click on the printer icon. It is that simple. Another example is if you need to print the head specifications just navigate to that screen and click on the printer icon. Try using it on different screens to see if it gives you the output that you desire.

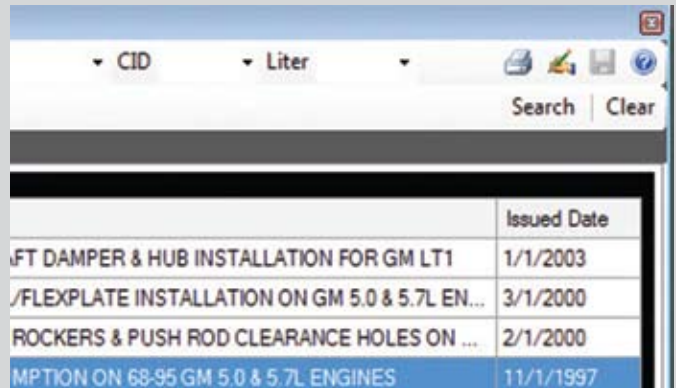
As many of you know PRO-SIS SA contains an Estimate, Work Order and Invoice feature. To access that area just hold down the <CTRL> key and click on Counter (figure 3). In previous issues of EP I have showed you how to use this feature.

First, what I would like to do now is remind you that you need to go to Setup on the main PRO-SIS SA screen and fill out the information on your company so that it is printed on documents you give to your customers. Second, a new feature has been added to the Labor tab that allows you to select task items to add to the estimate, work order or invoice (figure 4). To access this just right click your mouse on the labor description line and it will pop up. The Worktime, Description, and Tasknum can be changed by double clicking the item you wish to change. The hourly labor rate can be changed by clicking EDIT then SETUP on the main PRO-SIS SA screen.

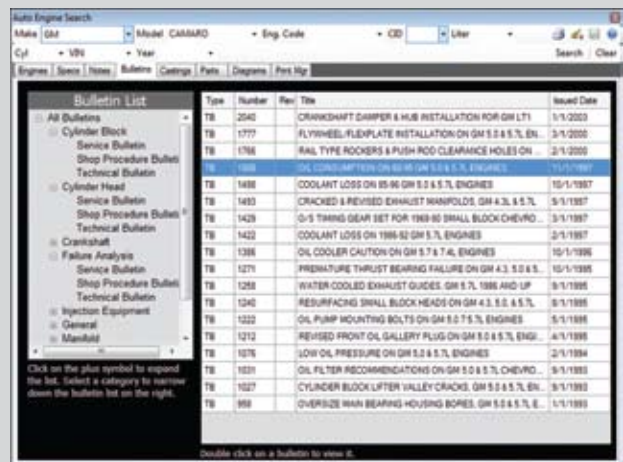
To select multiple task items from the list you can hold down the <CTRL> key while selecting the tasks. Once you have them selected press the ADD button before changing to the next shop area on the left. Do this for all areas and when you are done click on the FINISHED button to add them to the main screen. Once you are back to the main screen you can double click QTY to change it to the value you need.

Don't forget to press the SAVE icon (looks like a floppy disk) before leaving any screen of the counter feature in PRO-SIS SA. I encourage you to check this new feature out in PRO-SIS SA as it should save you some time when creating estimates and produce a professional looking estimate for your customers. ■

1



2



3



4

