

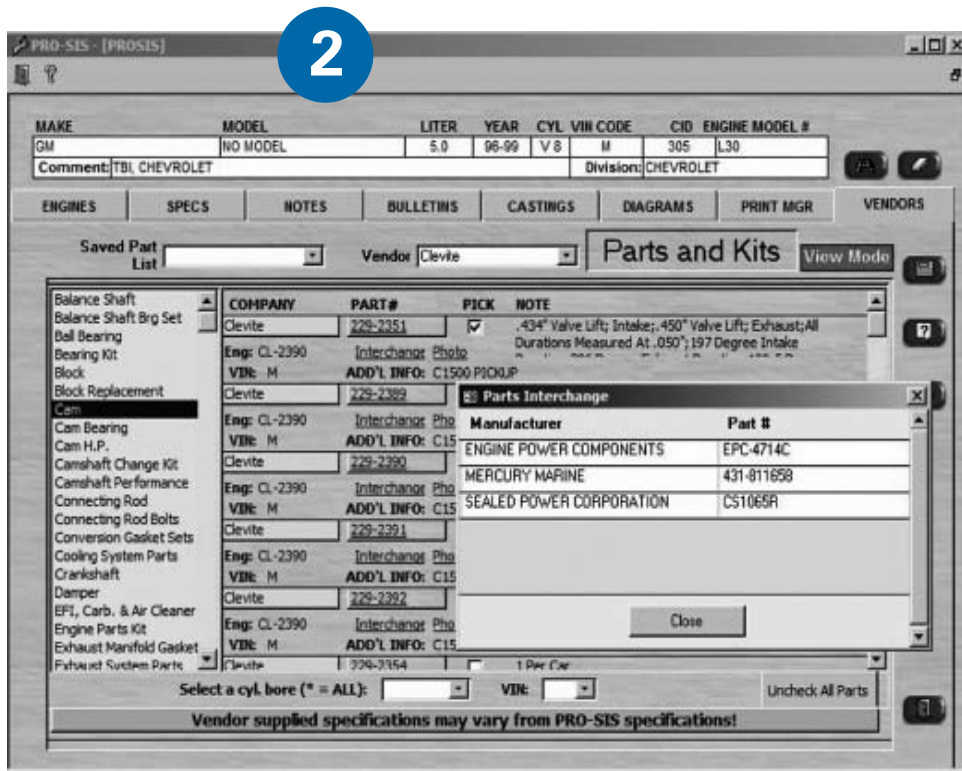
BY DAVE HAGEN,  
AERA SENIOR TECHNICIAN

## PRO-SIS Overview

### Engine specification software features major enhancements

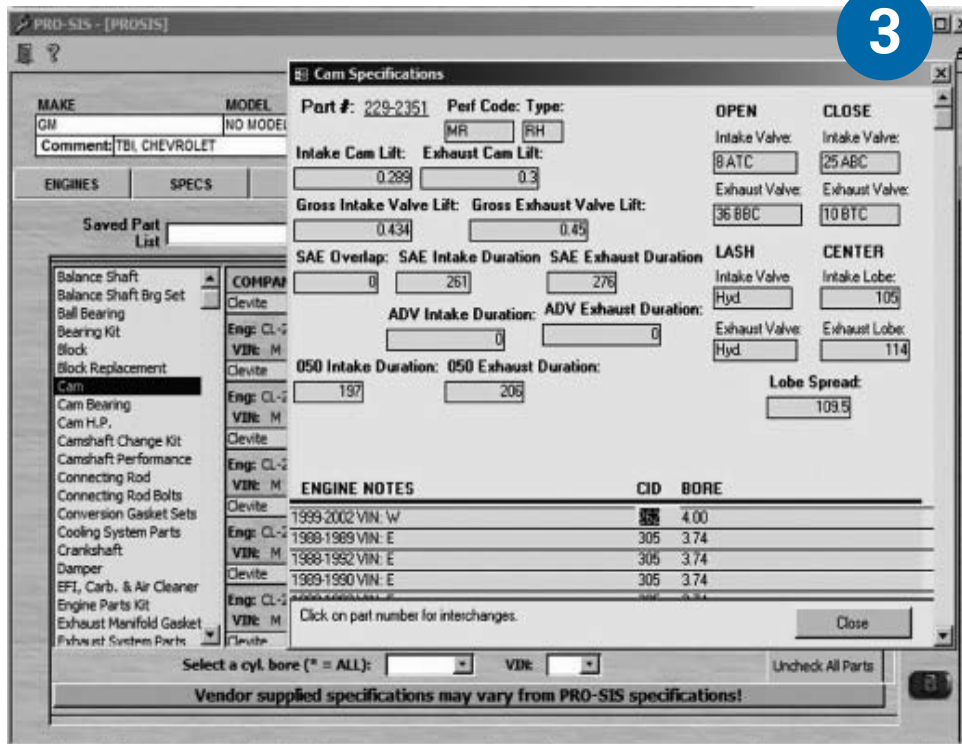
AERA has made some major enhancements to PRO-SIS over the past two years. By now, we hope everyone has had the chance to experience the new features of this specialized software — in particular, the engine parts data — which matches engine specifications and their respective part numbers in one database. However, if you aren't quite “up-to-speed” with all the changes, this article will fill you in on what you've been missing!

The first thing you will notice is that the main screen is different than before and we've added an additional “VENDORS” tab. So, instead of only seeing additional vendors in the interchange list, you can select a preferred vendor. Currently there are five vendors listed and we hope to add more as time goes on.



By now, we hope everyone has had the chance to experience the new features of PRO-SIS — in particular, the engine parts data — which matches engine specifications and their respective part numbers in one database. However, if you aren't quite "up-to-speed" with all the changes, this article will fill you in on what you've been missing!

The next "PRO-SIS CORNER" will feature an in-depth article by AERA Chief Technology Architect Richard Rooks about his future plans for PRO-SIS updates.



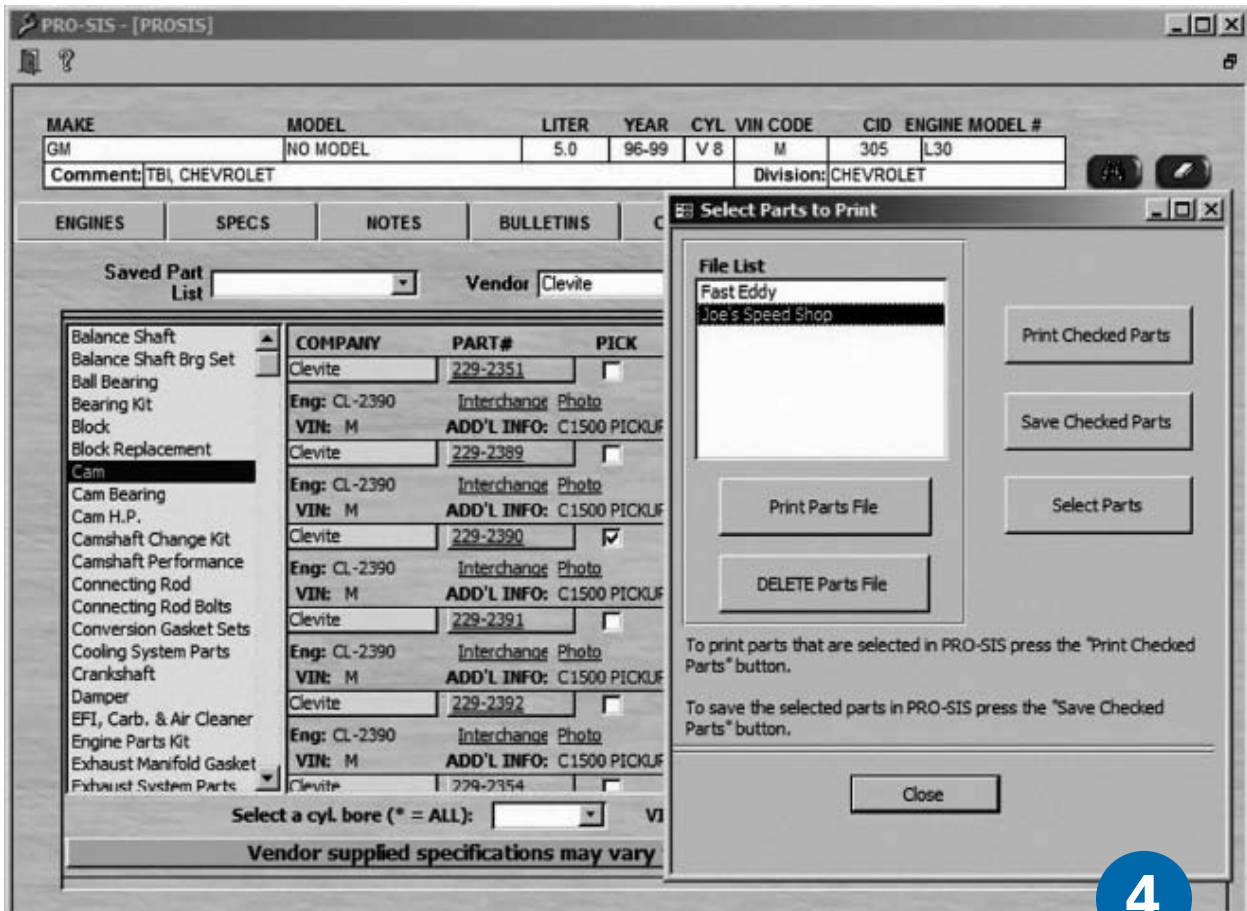
components you'd like to select from as shown in Figure 2.

The next process is observing the component list (left side scroll box) and selecting the parts you desire one at a time. Then, select which one(s) you want by clicking on the "PICK" listed box to the right of the part number. In this example the cam is highlighted and there are three possible selections, depending on year. All the part numbers listed on the left side under

You may also notice we've retained the original "PARTS" tab. It remains as a viable database for those of you who have been adding your own part numbers for specific engines since the year 2000.

Once you've selected an engine as shown in the top line below, a 5.0L GM VIN M, you can then access the VENDORS tab to obtain a list of engine

"COMPANY" are from the preferred vendor you previously selected. In this example, it is Clevite Engine Parts. Their part numbers for different applications are listed along with their specifications for that component. Clicking on the Part # will show their specifications (IF PUBLISHED) as shown in Figure 3. To see other



manufacturers Part Numbers, click on the Interchange link. If you want specifications on those numbers, you'll have to go back and select that manufacturer as a preferred vendor in the drop down list. That is of course, if they're on the list. We're hoping at some point in time, all manufacturers will become involved with PROSIS Parts and list their parts. A list of other suppliers' numbers comes up as shown in Figure 3.

The selection process continues until you've selected (picked) all the required engine components for this particular job. After you've done that, you can print the "PICK" list by clicking on the familiar printer button. A dialog box will then come up, similar to the one shown above, and you can see you've got several choices.


As shown in Figure 4, you can see there are options and you can just print or create a customer listing by saving the picked list for future reference. Remember, one of the basic concepts of this program is that it be used as a storage device; you can save it by invoice number, customer number, engine or some other identifiable means.

The idea of this is being able to access the "Pick" list at a later date by simply selecting the

same GM 5.0L engine as before and clicking on the Vendors tab and then clicking on the print icon. At that point, all saved "Pick" lists for that engine only will appear. As you can see in the example there is one for Joe's Speed Shop and Fast Eddy. If you want to print a selection of parts, simply highlight the desired list and click on the "Print Parts File" directly below the file list box. As a feature, after printing the list, you'll also get an electronic reference of the "Pick" list for individual components that the box was previously checked. You can add more parts to the existing list by simply checking the additional boxes you want.

There is another way of finding the "Saved" parts lists for a particular engine by first clicking on the Vendors tab and then clicking on the down arrow of the selection box in the upper left hand corner below the Notes tab. Select the desired file by highlighting it and then you can either look at the items selected electronically or print the file to your paper printer. Notes appear for each component on the screen, but only the checked notes print on paper — as shown in Figure 5, on the following page.

Another feature you may have noticed in the parts listing is that specific parts may have

<b>ENGINE SPECIFICATIONS</b>		Mfg:	GM
		Model:	No Model
		Liter:	5.0L
		V I N:	M
		Year:	96-99

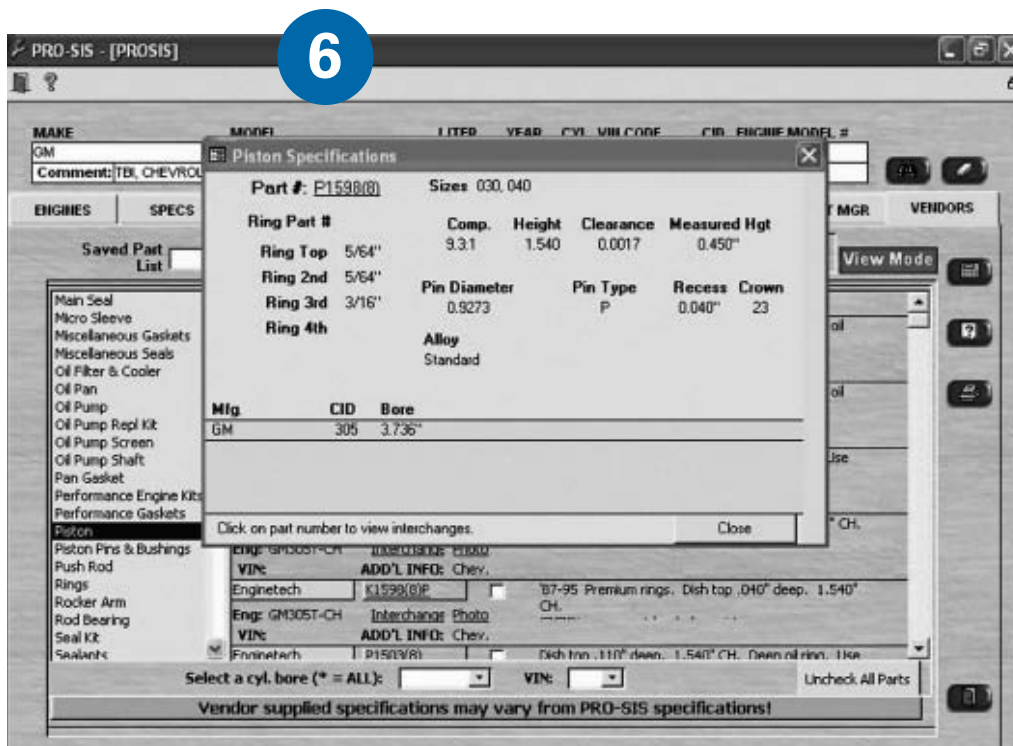
**PARTS INFORMATION**

SUPPLIER	DESCRIPTION	PART NUMBER	NOTE
EngineTech	Exhaust Valve St	E2253	Std. stem. Swirl polished, high-performance. .3415" stem. 1.500" head.
EngineTech	Intake Valve Std.	V2690	'96-02 .3411" stem. 1.840" head. 1 groove.
EngineTech	Timing Set	TS506C	'96-02 With roller cam. 3 Pc. set.
EngineTech	Oil Pump	EP155	'93-02 With 3/4" inlet hole.
EngineTech	Expansion Plug	PK1B	'76-02 Brass plugs.
EngineTech	Cam	ES1573	'96-02 Use roller followers.
EngineTech	Head Bolts	HB142	'76-02 With thread sealer. Two sets required.
EngineTech	Piston	P3042(8)	'96-02 Dish top. 1.540" CH. Shallow oil ring. Use 37468 rings.
EngineTech	Rings	M37468	'93-02 Premium. Ductile top. 5/64 5/64 3/16". Shallow oil ring.
EngineTech	Cam Bearing	CC428	'76-02 .010" undersized ID for re-ground cam journals.
EngineTech	Full Gasket	C5.0-A	'96-02 W/1pc. rear main seal. 16 premium positive valve stem seals. <input type="checkbox"/> <input type="checkbox"/> Gasket and seal for plastic timing cover not included.

Portions of materials contained herein have been reprinted with permission of General Motors Corporation, Service Operations. This information is provided from the best available sources. However, AERA does not assume responsibility for data accuracy or consequences of its application. Members and others are not authorized to reproduce or distribute this material in any form, or issue it to their branches, divisions, or subsidiaries, etc. at a different location, without written permission.  
 © Copyright AERA 2005



Reference:



**REMINDER:**  
The latest PRO-SIS update is included on the A•E•R•Aid CD enclosed with this mailing.

specifications to them, such as the camshafts, pistons or valves. If you click on the EngineTech part number the specifications for that part number are displayed. This feature is specifically helpful when engines use multiple size valves and physically measuring for comparison is the only way to determine which one is needed. The piston specifications are also included and give you critical piston to wall clearance for that manufacturer's piston. Any time you see a part number, clicking on the part number displays a screen of component specifications for the selected part number. (See Figure 6 above, Piston Specifications Screen.)

Keep watching "PRO-SIS Corner" for future developments with additional parts functions to make your life easier. Remember, with any new software function, experimenting with the different options helps you learn the program faster.

Next month, Richard Rooks, AERA's Chief Technology Architect, will explain how easy it is to use the NEW photo option when using PRO-SIS Parts. After all, wouldn't it be nice to visually compare an oil pump you've removed from an engine with the one you're purchasing? As an example, here is one such offering (see Figure 7) for the GM 5.0L engine. ■

If you found this information useful or if you have other topics of interest for any column featured in ShopTalk, please let us know by calling the AERA Technical Department direct at 1-888-324-2372.

## 7 GM 5.0L Oil Pump



### ASSOCIATE MEMBERS

Any parts company that is interested in supplying information to add to this VENDORS LISTING, please contact John Goodman via email: [john@aera.org](mailto:john@aera.org). Or, you may call him directly at 888-326-2372, Ext. 205. This database is intended to put part numbers closer to those who are working on the engines, which has to be a win-win situation for all.